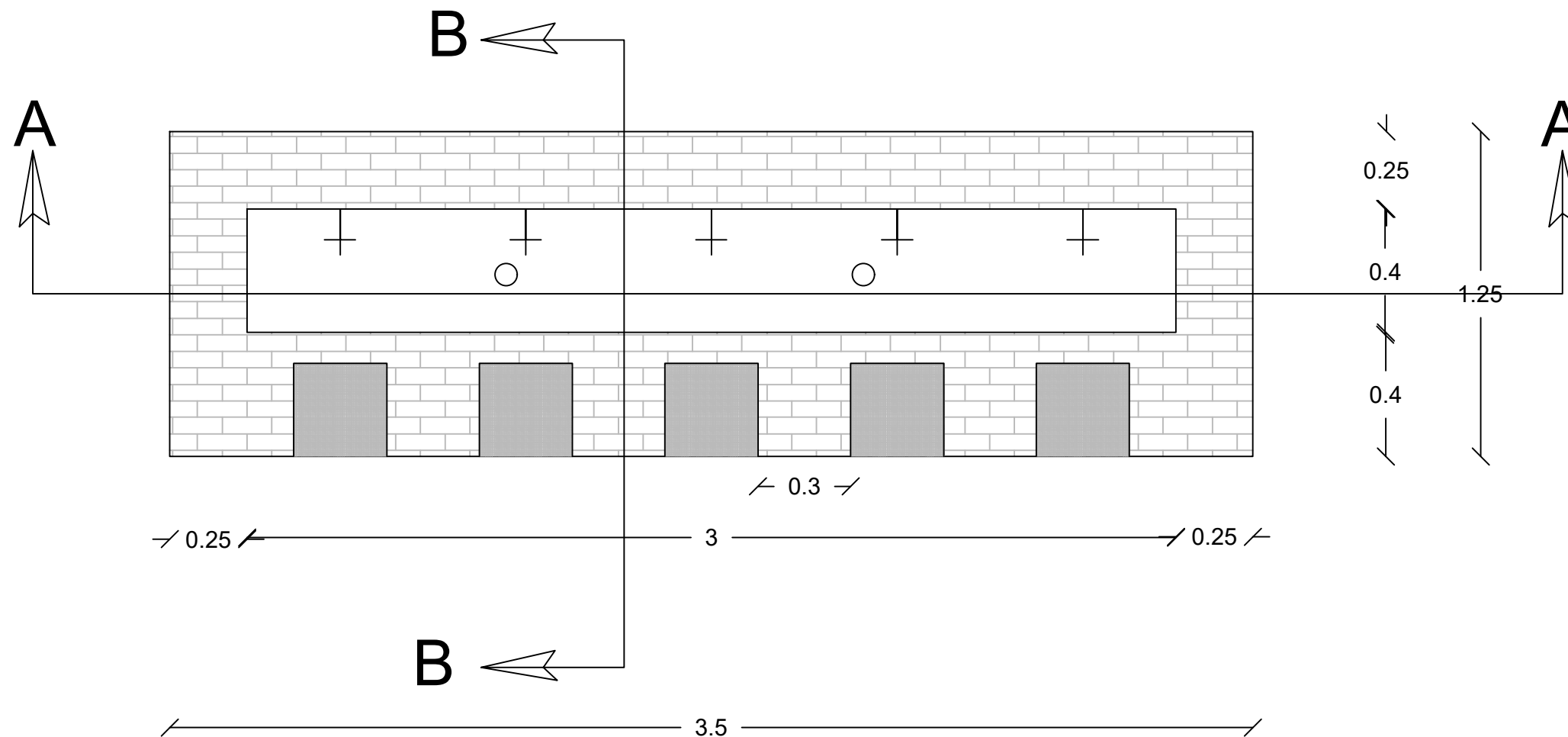


General Note

1. For details please see the BOQ

# Hand Station Floor Plan



Drawing Title :Plan  
Drawing Code: SCI AFG/2025/01

DESIGNED BY: WASH TEAM,  
SAVE THE CHILDREN,  
KABUL-AFGHANISTAN  
March, 2025

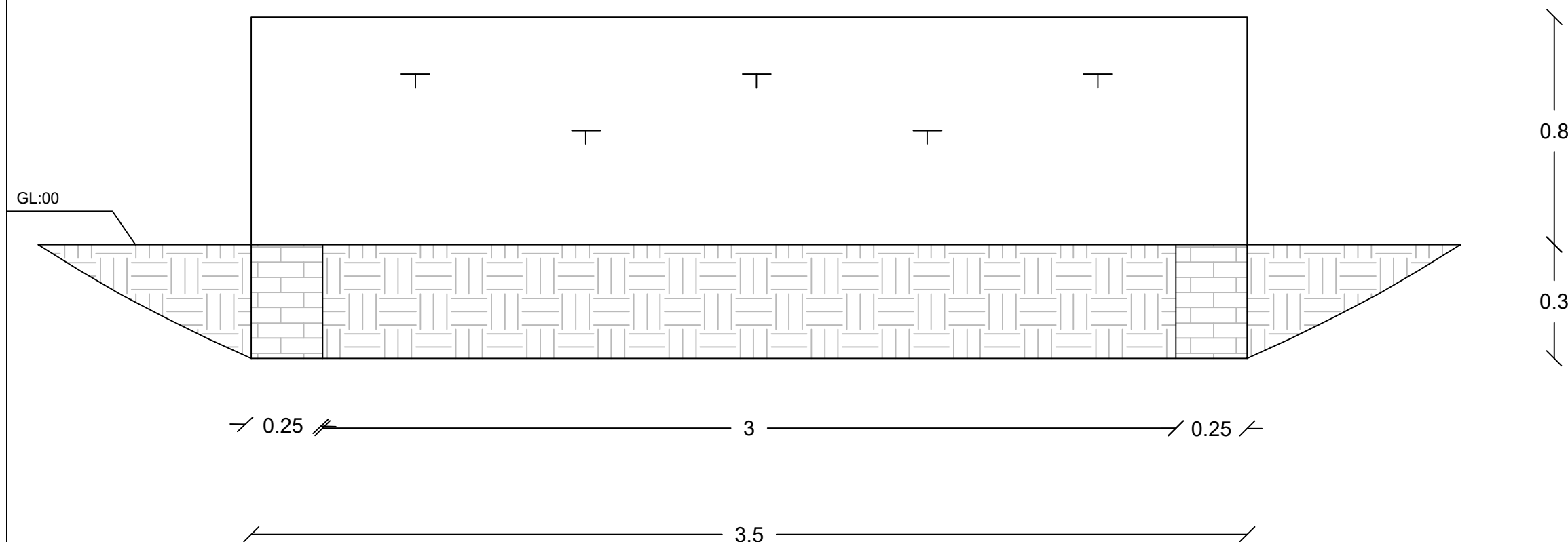
REVIEWED & APPROVED BY : WASH TEAM,  
PROGRAM DEVELOPMENT AND QUALITY (PDQ)

Scale:	1 : 1
View:	Plan
Sheet #:	1 of 4

General Note

1. For details please see the BOQ

Section A-A



**Drawing Title :**Section ( A-A )  
**Drawing Code:** SCI AFG/2025/01

**DESIGNED BY:** WASH TEAM,  
SAVE THE CHILDREN,  
KABUL-AFGHANISTAN  
March, 2025

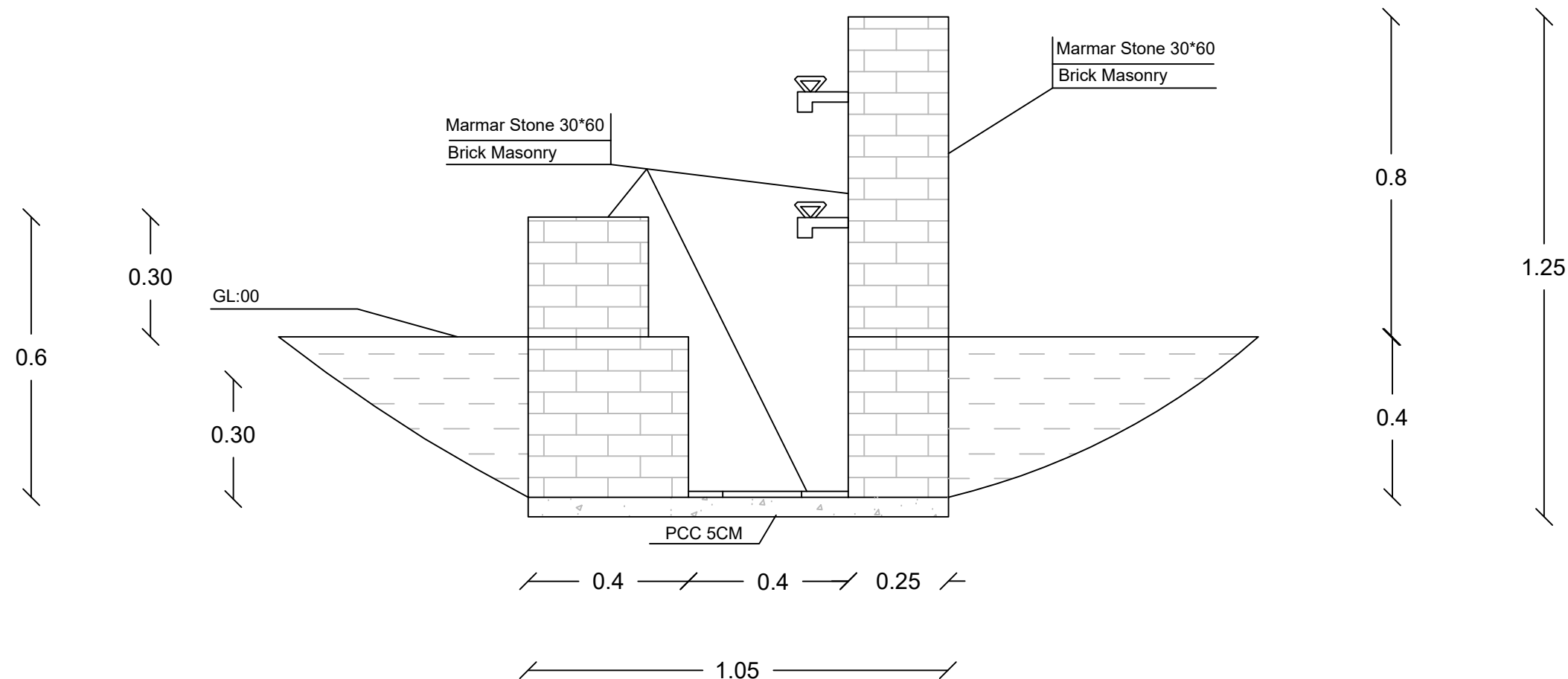
**REVIEWED & APPROVED BY :** WASH TEAM,  
PROGRAM DEVELOPMENT AND QUALITY (PDQ)

Scale:	1 : 1
View:	Section A-A
Sheet #:	2 of 4

General Note

1. For details please see the BOQ

Section B-B



Drawing Title :Section ( B-B )  
Drawing Code: SCI AFG/2025/01

DESIGNED BY: WASH TEAM,  
SAVE THE CHILDREN,  
KABUL-AFGHANISTAN  
March, 2025

REVIEWED & APPROVED BY : WASH TEAM,  
PROGRAM DEVELOPMENT AND QUALITY (PDQ)

Scale:	1 : 1
View:	Section B-B
Sheet #:	3 of 4



Section C-C

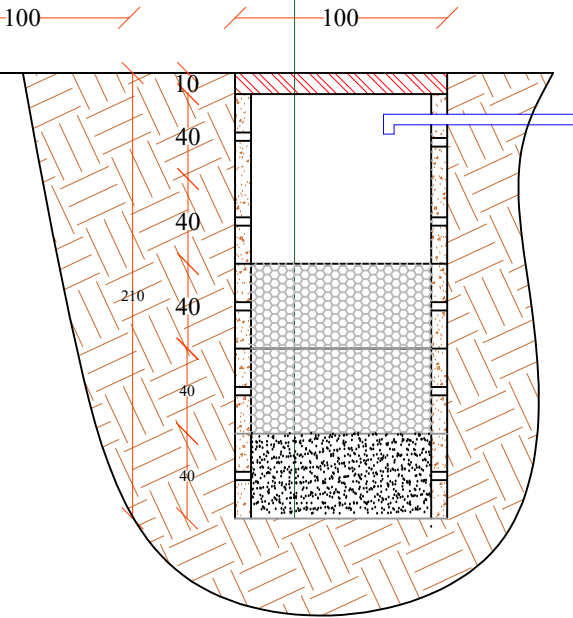
RCC cap with outer diameter of 100cm

Bold stone/gravel ( t = 80cm )

Fine sand ( t = 40cm )

Pitch with diphth of 210cm, and diameter of 100cm

G.L



Pipe PVC, D=75mm

General Note

1. There is a soak pit made of 5 PCC rings with the above mentioned size and a cap on their tops and is used for hand washing used water which is collected from floor
2. For more details please see the BOQ

Scale:	1 : 1
View:	Section(B-B,C-C)
Sheet #:	4 of 4